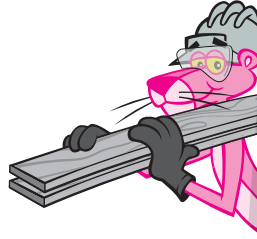




# LUMBER STRUCTURAL FRAMING



**ROTPROOF.  
RUSTPROOF.  
COMPLICATION-FREE.**



# OWENS CORNING® LUMBER STRUCTURAL FRAMING

## ROTPROOF. RUSTPROOF. COMPLICATION-FREE.

OC™ Lumber is a rotproof, rustproof composite alternative to traditional wood and steel. Designed to install like the lumber you use every day<sup>1</sup>. Made to last.

- Wood-free Composite Lumber
- 4 profile sizes: 2" x 4", 2" x 6", 2" x 8", and 2" x 10"
- Limited lifetime warranty - Residential
- 25-year limited warranty - Commercial

### DISCOVER THE GLAS-POWERED™ DIFFERENCE



Owens Corning® Lumber is reinforced with Advantex® Fiberglass™, a proprietary corrosion resistant technology that adds strength and durability properties from the inside out.

**STRENGTH + DURABILITY**



#### DESIGNED FOR DURABILITY

- Resists mold, mildew, and pests
- Allows for contact with water (salt and fresh) and ground

**ROTPROOF. RUSTPROOF.**



#### THERMAL-RESISTANT DESIGN

- Designed for low expansion and contraction
- Heat-reflective technology

**THERMAL EXPANSION STABILITY**



#### EASY TO INSTALL

- Cuts and installs just like wood
- Flat and uniform boards

**COMPLICATION-FREE**

<sup>1</sup>Owens Corning® Lumber is specifically designed for deck and dock framing, and is not intended for use in other applications. Not for internal use.

ATTRIBUTES	OC™ LUMBER STRUCTURAL FRAMING	STEEL	TRADITIONAL WOOD
<b>GLAS-POWERED™</b>	<b>Advantex® Fiberglas™</b>	×	×
Rotproof	✓	✓	×
Rustproof	✓	×	✓
Allows for water (salt & fresh) contact	✓	×	×
Heat-Reflective technology	✓	×	×

## STANDARD PROFILES



### 2" x 4" (1.5" x 3.5")

Standard Lengths: 12', 16', 20'  
Woodgrain: Both Sides



### 2" x 6" (1.5" x 5.5")

Standard Lengths: 12', 16', 20'  
Woodgrain: Both Sides



### 2" x 8" (1.5" x 7.5")

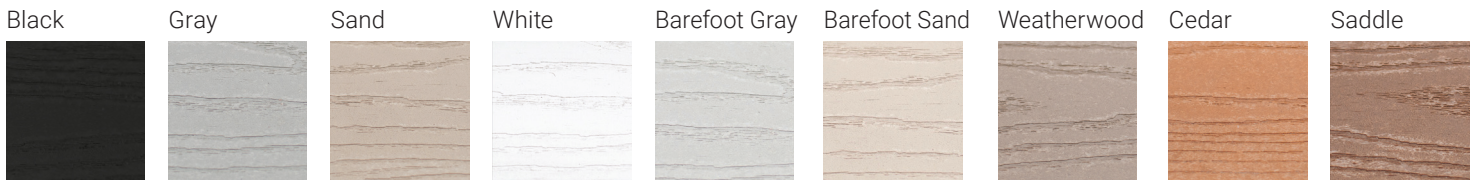
Standard Lengths: 12', 16', 20'  
Woodgrain: Both Sides



### 2" x 10" (1.5" x 9.25")

Standard Lengths: 12', 16', 20'  
Woodgrain: Both Sides

## CHOOSE FROM BLACK + 8 COLORS



### Standard colors

### Special colors

All 4 standard profiles have a square-edged design. Check custom lengths and special colors availability with you Owens Corning representative. Minimum order quantity may apply. Product samples available upon request. Actual product colors may vary due to photographic lighting sources or screen settings.

## STANDARD PROFILES & PACKAGING

PROFILE (IN)	ACTUAL DIMENSION (IN)	LENGTH			WEIGHT	NO. OF BOARDS PER BUNDLE
		12'	16'	20'		
		WEIGHT (PER BUNDLE)				
2" x 4"	1.5" x 3.5"	1,764 lb	2,352 lb	2,940 lb	1.75 lb/ft	84
2" x 6"	1.5" x 5.5"	2,227 lb	2,970 lb	3,712 lb	2.90 lb/ft	64
2" x 8"	1.5" x 7.5"	2,016 lb	2,688 lb	3,360 lb	4.00 lb/ft	42
2" x 10"	1.5" x 9.25"	2,037 lb	2,716 lb	3,395 lb	4.85 lb/ft	35
	<b>PALLET WEIGHT</b>	80 lb	120 lb	120 lb		

PROPERTIES	COMPRESSION PARALLEL	COMPRESSION PERPENDICULAR	BENDING STRENGTH	MODULUS OF ELASTICITY	MODULUS OF RUPTURE	FLAME SPREAD INDEX
<b>METHOD</b>	ASTM D198	ASTM D143	ASTM D198	ASTM D4761	ASTM D4761	ASTM E84
<b>DESIGN VALUES</b>	700 psi	600 psi	1400 psi	350,000 psi	1400 psi	65-70

Design values appropriate up to 125°F.

## PROJECT GALLERY

Owens Corning® Lumber Structural Framing delivers strength, durability, and ease of installation:



### Conch Inn Resort & Marina Marsh Harbour, Bahamas

After Hurricane Dorian destroyed the marina in 2019, the Conch Inn opted for a project featuring Owen Corning® Lumber for ultimate durability, even close to salt water.



### Residential Deck Lake Keowee in Salem, South Carolina

Homeowner was looking for a material that wouldn't rot and need replacement overtime, but keeping the same installation process of wood. Owens Corning® Lumber was a no-brainer.



### Residential Dock Lake Howard in Winter Haven, Florida

In this project, Owens Corning® Lumber was selected for its combination of design and durability. The Gray color perfectly matched the top deck material aesthetics, and the owner won't need to worry about rot or degradation over time.



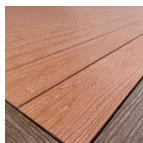
### Residential Dock Lake Holden in Orlando, Florida

A family of DIYers set out to rebuild their dock, looking to try an alternative solution to conventional lumber without a learning curve. They chose Owens Corning® Lumber because it didn't require the purchase of additional tools or learning a new skill set.

Local standards and codes may vary.

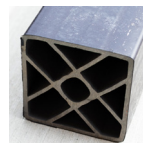
## OC™ LUMBER

Other Applications  
& Products



### DECKING BOARDS

A wood-free composite alternative that combines outstanding strength and durability to build decks and docks that last.



### STRUCTURAL POSTS

A high-performance composite alternative designed to enable resilient and durable structures.

LEARN MORE AT [OWENSCORNING.COM/LUMBER](https://www.owenscorning.com/lumber)



[OwensCorningLumber](https://www.facebook.com/OwensCorningLumber)



[oc.lumber](https://www.instagram.com/oc.lumber)



[oc.lumber](https://www.tiktok.com/@oc.lumber)



# HOW WE BUILD NOW™

## Owens Corning Lumber

5111 S Pine Ave #G  
Ocala, FL 34480 USA  
855.909.9501

<https://www.owenscorning.com/framing>

This information and data contained herein is offered solely as a guide in the selection of product. We believe this information to be reliable but do not guarantee its applicability to the user's process or assume any responsibility or liability arising out of its use or performance. The user agrees to be responsible for thoroughly testing any application of the product to determine its suitability. Statements in this publication shall not be construed as representations or warranties or as inducements to infringe on any patent or violate any law, safety code, or insurance regulation. We reserve the right to modify this document without prior notice.

Pub. No. 100265430A. December 2023. THE PINK PANTHER™ & © 1964–2023 Metro-Goldwyn-Mayer Studios Inc. All Rights Reserved. © 2023 Owens Corning. All Rights Reserved.